



# Alexander Hudson Estates

---

Sales Particulars

# Alexander Hudson Estates

Hawks Edge, West Moor, NE12





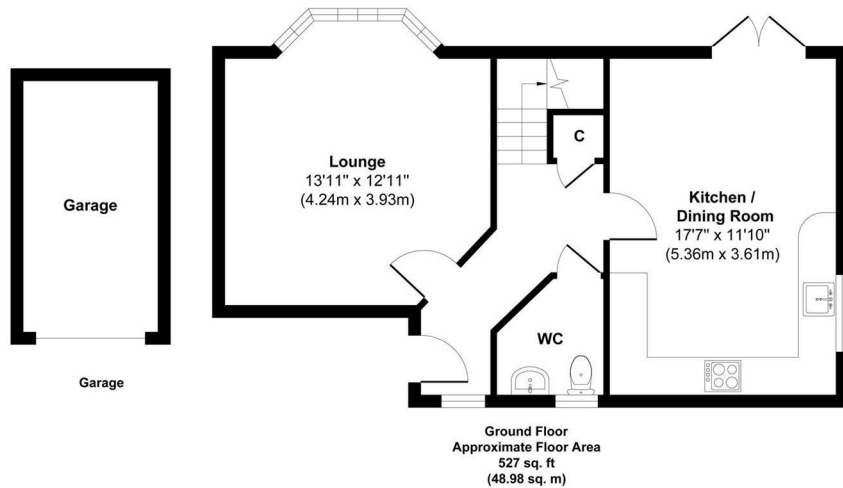
# The Property

Alexander Hudson Estates introduces to market this three-bedroom, mid terraced family home located within the increasingly popular residential area of West Moor, close-by to local shops, restaurants, and transport links. With excellent schooling nearby, this property represents a fantastic opportunity to acquire a family home in a popular area.

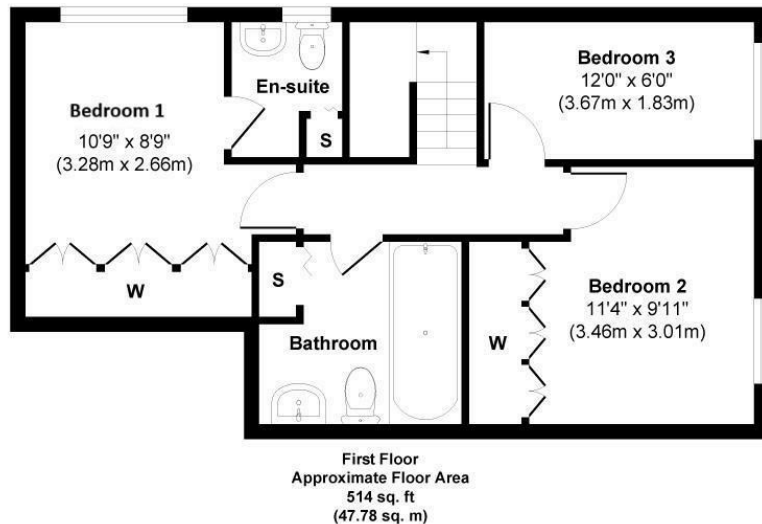
With spacious living throughout, this property briefly comprises of entrance hallway, downstairs WC, living room and a large dining kitchen. On the first-floor lies the family bathroom and three bedrooms, with the master having an en-suite shower room. Externally, the front of the property features a low maintenance garden. A private garden is located to the rear.

The property is close to Gosforth, Balliol, and Quorum Business Parks, with the A1 and A19 easily accessible for those commuting further afield. West Moor is also adjacent to Killingworth, home to The Killingworth Centre (anchored by a large Morrison's supermarket), and the White Swan Centre, which includes a Doctors' surgery, activity hall, cafe and Killingworth Library. The Lakeside Centre offers up various leisure facilities including a swimming pool and soft play for children.

Freehold  
Council Tax: C  
EPC Rating: 77



Approx. Gross Internal Floor Area 1,041 sq. ft / 96.76 sq. m  
Illustration for identification purpose only, measurements approximate  
and not to scale, unauthorized reproduction is prohibited. All rights reserved for  
Alexander Hudson Estates



Approx. Gross Internal Floor Area 1,041 sq. ft / 96.76 sq. m  
Illustration for identification purpose only, measurements approximate  
and not to scale, unauthorized reproduction is prohibited. All rights reserved for  
Alexander Hudson Estates





---

Alexander Hudson Estates  
The Printworks  
20 Arrow Close  
NE12 6QN

0191 268 7433  
[sales@alexanderhudson.co.uk](mailto:sales@alexanderhudson.co.uk)